

***Passiflora quadrangularis* L. 1759**  
*Passiflora macrocarpa* Mast. 1869  
 Subgenus *Passiflora* Supersection *Laurifolia* Série  
*Quadrangulares*

**.Cultivated plant**

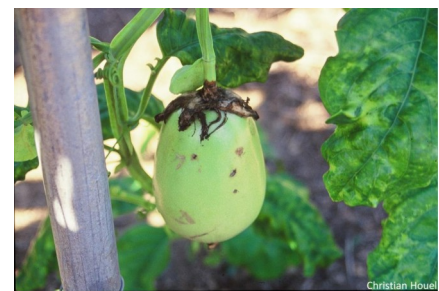
Plant glabrous throughout; stem stout, 4-angled, the angles conspicuously winged; stipules ovate or ovate-lanceolate, 2 to 3.5 cm. ' long, 1 to 2 cm. wide, acute at apex, narrowed at base, entire or > slightly serrulate, thin-membranous; petioles 2 to 5 cm. long, stout, canaliculate along upper side, 6-glandular, the glands in pairs, nearly sessile; leaves entire, broadly ovate or ovate-oblong, 10 to 20 cm. v long, 8 to 15 cm. wide, abruptly acuminate, rounded, subtruncate, shallowly cordate, entire at margin, penninerved, the midnerve prominent, strongly elevated beneath, the principal lateral nerves 10 to 12 to a side, elevated beneath; peduncles 1.5 to 3 cm. long, 3-angled; bracts cordate-ovate, 3 to 5.5 cm. long, 1.5 to 4 cm. wide, acute or acutish, entire or serrulate toward base, thin-membranous; flowers up to 12 cm. wide; calyx tube campanulate; sepals ovate or ovate-oblong, 3 to 4 cm. long, 1.5 to 2.5 cm. wide, concave, cucullate at apex, corniculate, greenish or greenish red without, white, violet, or pinkish within; petals oblong-ovate to oblong lanceolate, 3 to 4.5 cm. long, 1 to 2 cm. wide, obtuse, flat, white, deeply pink-tinged; corona 5-ranked, the 2 outer ranks filamentose, subequal (filaments up to 6 cm. long, equaling or somewhat longer than the sepals, terete, radiate, banded with reddish purple and white at base, blue at middle, densely mottled with pinkish blue in upper half), the third rank tubercular (tubercles clavate, about 2 mm. long, deep reddish purple), the fourth rank filamentose (filaments 1 to u 1.5 mm. long, banded with reddish purple and white), the innermost rank membranous, 3 to 7 mm. long, unequally lacerate-cleft, slightly inclined inward; operculum membranous, 4 to 6 mm. long, inclined inward, denticulate, white, reddish purple at margin; limen annular, fleshy; gynophore stout, enlarged in lower third by 2 annular processes (trochlea); ovary ovoid; fruit oblong-ovoid, 20 to 30 cm. long, 12 to 15 cm. wide, terete or longitudinally 3-grooved; seeds broadly obcordate or suborbicular, 7 to 10 mm. long, 5 to 8.5 mm. wide, strongly flattened, reticulate at center of each face, radiately striate at margin.



Christian Houel



R. GRAVESON



Christian Houel



Christian Houel



Christian Houel