

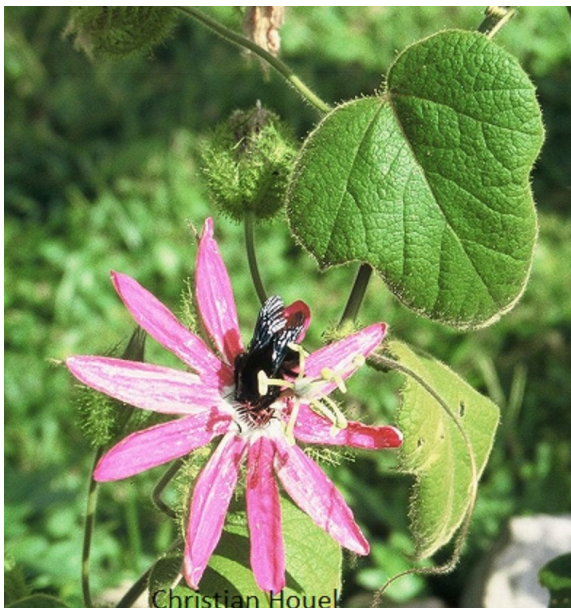
*Passiflora sublanceolata* J.M. MC Dougal 2004  
Subgenus *Passiflora* Supersection *Stipulata* Section  
*Dysosmia*

Distribution. From Tabasco, Mexico, to northeastern Belize. *Stem* slender, terete, tomentose. *Stipules* semi-annular about the stem, deeply cleft into filiform pinnatisect and filiform gland tipped divisions, (pinnatisect divisions 5–12mm long, 0.2–0.5mm in diameter. *Tendrils* slender, pilose. *Petioles* 5–2 cm long, pilose, bearing numerous course gland tipped hairs. *Leaves* 5–12 cm long, 3–8 cm wide, lanceolate in general outline, shallowly three lobed (basal lobes reduced, semicircular) densely tomentose on adaxial



Christian Houel

and abaxial surfaces, margin with numerous gland tipped hairs. *Peduncles* 8–11 cm long, pilose, solitary. *Bracts* lanceolate in outline, twice pinnatisect with gland tipped segments, 2–5.5 cm long, 1–3 cm wide (bracts continue increasing in size around developing fruit). *Flowers* pink or purplish-pink and white up to 8 cm wide, reflexing at anthesis. *Sepals* narrowly ovate, 3–5.5 cm long, 8–13mm wide, obtuse, pink or purplish-pink on adaxial surface, abaxial surface pink or purplish-pink and green, shallowly keeled with awn 4–6mm long, pilose. *Petals* narrowly ovate, obtuse, 3–5.5 cm long, 8–14mm wide, thin-membranous, pink or purplish-pink on adaxial and abaxial surfaces. *Corona filaments* in three series, the outer series 8–13mm long, erect, filiform, white, inner two series filiform 2–3mm long, deep pink (Fig. 15). *Operculum* membranous. *Limen* erect, 2–3mm long. *Androgynophore* 1.7–2.1 cm long, pale green flecked maroon. *Ovary* ovoid, pilose. *Style* pilose. *Stigma* olive green. *Fruit* ovoid, bright scarlet when mature, 3.5–5.5 cm long, 2–3 cm in diameter, pilose. *Arils* clear, sweet and juicy. *Seed* flattened, oblong-cuneate, reticulate, 5mm long, 4mm wide, shallowly tridentate at apex, seeds per fruit 40–(50)–64. Germination epigeal.



Christian Houel



Alfredo Dorantes Euan