

New Registered Cultivars (to Spring 2003)

R. J. R. Vanderplank, Registrar

The National Collection of Passiflora, Lampley Road, Kingston Seymour, Somerset, BS21 6XS. U.K.

001 P. 'Dakota Ransom'

Sally Ransom's cultivar. (*P. 'Amethyst'* × *P. caerulea*) Vine: slender, vigorous; Leaves: narrowly five lobed, deep bluey-green with reddish veining; Flowers: large (10 cm diameter) white and blue, sweetly scented rather like candy; Bracts: large, red veining; Sepals: white; Petals: white with a tint of blue; Corona filaments: five series, outer ranks long speckled with purple-blue with purple base, inner series short and upright white at base with purple tips.

002 P. 'Jutta'

Henk Wouters's cultivar. (*P. umbilicata* × *P. tucumanensis*) Vine: glabrous; Leaves: deeply three lobed, pale green; Flowers: bluish-violet and greeny-white (7-8 cm diameter), sepals and petals reflex when flower is fully open, free flowering; Sepals: greeny-white, keeled with a long awn; Petals: pale violet or pale bluish-violet; Corona filaments: three series, outer series pale violet at base then banded bluish-violet and white, inner series bluish-violet with white tips; Cultivation: avoid high temperatures; Named in honor of the German Passiflorist Jutta Jedzig. Photo on pp. 25.

003 P. 'Corry Rooymans'

Henk Wouters's cultivar. (*P. 'Rosa Stern'* × *P. alata*) Vine: glabrous; Leaves: deeply three lobed, pale green; Flowers: pink, bluish-violet and white (9-10 cm diameter), sepals and petals reflex when flower is fully open, free flowering; Sepals: mauve-pink, keeled with awn; Petals: mauve-pink; Corona filaments: five series, outer series frilly with pale violet, deep violet and white bands, inner series short, purplish-violet; Cultivation: in shady position avoiding full sun and high temperatures; Named in honor of Henk Wouters's mother. Photo on back cover.

004 P. 'Velvet Beauty'

Angelika Schwarzwald's cultivar. (*P. ×violacea* × *P. caerulea*) Vine: strong, vigorous; Leaves: narrowly five lobed; Flowers: large, showy (9 cm diameter) white and black (very deep purple); Sepals and petals: white; Corona filaments: white with deep purple centre; The name given to this cultivar is inspired by the centre portion which looks like black velvet. Photo on pp. 25.

005 P. 'Snow White'

John Thompson's cultivar. (*P. caerulea* × *P. 'Amethyst'* × *P. 'Sapphire'*) Vine: large, strong; Leaves: narrowly five or seven lobed; Flowers: large (8.5 cm diameter), showy, pure white except for a small splash of pink and yellow, pleasantly scented like *P. 'Sapphire'*; Sepals and petals: white; Corona filaments: outer series, white with pale yellow base (2 cm long). Inner series, upright with mauve-pink tip. Photo on pp. 25.

006 P. 'Sundance'

John Thompson's cultivar. (*P. caerulea* × *P. 'Amethyst'* × *P. 'Sapphire'*) Vine: large, strong; Leaves: narrowly five lobed; Flowers: large (8.5 cm diameter), showy, mostly white with pretty mauve-red band on the corona filaments, pleasantly scented like *P. 'Sapphire'*; Sepals and petals: white; Corona filaments: Outer series, white with broad mauve-red band near the centre and pale yellow base (2 cm long); middle series: very short (1 mm) mauve-red; Inner series: upright with red tips. Photo on pp. 25.

Acknowledgement

John Thompson has most generously donated £100.00 towards the costs of the publication of **The International Passiflora Register** (2002) which is now at the printers

Contact Information.

If you have a new cultivar which you would like to register please contact one of the members of the Passiflora Hybrids and Cultivars Registration Committee:

Eladio Gonzalez Blanco,
Rafael Belderrain 12-3D, 33930 La Felguera, SPAIN.

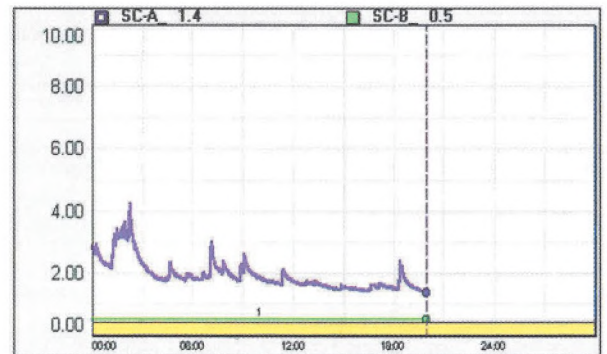
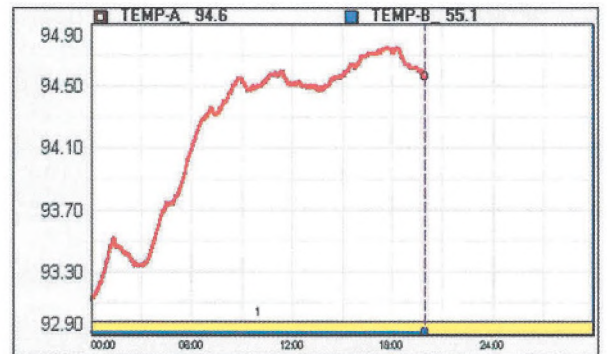
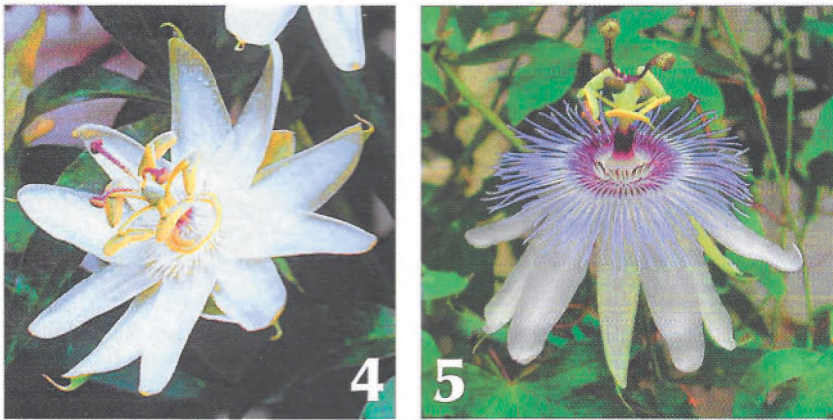
Christian Feullet,
11400 Hennessey Drive, Beltsville, MD 20705 USA.

Axel Frank,
Sebastian-Ott-Weg 5, D-72488 Sigmaringen, GERMANY.

Les King,
27 Ivar Gardens, Basingstoke, Hampshire. RG24 8YD, UK.

Emil Kugler,
Treustrasse 92/6/8, A-1200 Vienna, AUSTRIA.

continued on pp. 26...



New Cultivar Registrations...

1: *Passiflora* 'Jutta' (photo by Henk Wouters). 2: *Passiflora* 'Velvet Beauty' (photo by Angelika Scharzwald). 3: *Passiflora* 'Sundance' (photo by John Thompson). 4: *Passiflora* 'Snow White' (photo by John Thompson). 5: *Passiflora* 'Dakota Ransom' (photo by Sally Ransom). The back cover photo is of *Passiflora* 'Coory Rooymans' (photo by Henk Wouters). For complete descriptions of these beautiful new cultivars see John Vanderplank's report on pp. 18.

Biofeedback Study of *Passiflora incarnata*: exploratory results

Upper Graph: Finger temperature (Temp-A; F°) after consumption of *P. incarnata* tea. **Lower Graph:** Skin conductance (SC-A) of same. See last paragraph of text (pp. 12) for additional information.

International Seed Bank Update:

Domestic Seed Bank Update:

Donations by: Andrew Adair (AA); Ron Boender (RB); Fernando Cagna (FC); L. Craig Daniels (LCD); Don Ellison (DE); Hap Hellman (HH); Cor Laurens (CL); Jan Meerman (JMe); Mario Posla (MP); John Vanderplank (JV); Maurizio Vecchia (MV); Henk Wouters (HW). WC denotes "wild collected."

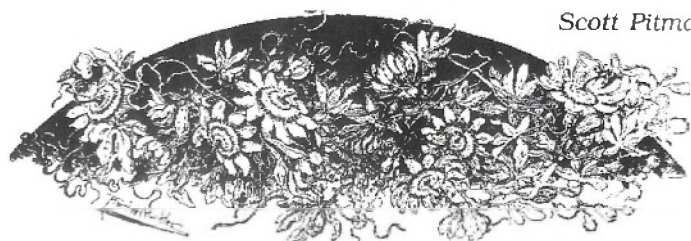
The following seed is available as of April 30, 2003:

1. *actinia* (CL)
2. *adenopoda* (CL)
3. *alata* (CL)
4. *alata* (Brazil, CL)
5. *ambigua* (AA)
6. *amethystina* (WC, Bra., CL)
7. *arida* (HW)
8. *aurantia* (DE)
9. *boenderi* (RB)
10. *caerulea* (CL)
11. cv 'Constance Elliott' (CL)
12. *capsularis* (AA)
13. *cinninnata* (C. Rica, CL)
14. *coriacea* (C. Rica, CL)
15. *coriacea* (WC, Bel., JMe)
16. *cuneata* (DE)
17. *edulis edulis* (CL)
18. *edulis flavicarpa* (CL)
19. *edulis* 'red fruit' (CL)
20. *foetida* (WC, Thai., CL)
21. *gabrielitana* (WC, Guy., CL)
22. *gibertii* (CL)
23. *gracilis* (CL)
24. *helleri* (CL)
25. *herbertiana* (CL)
26. *incarnata* (HH, MV)
27. *lancetillensis* (JMe)
28. *ligularis* (C. Rica; CL)
29. *ligularis* (Colombia, CL)
30. *manicata* (JV)
31. *mayarum* (WC, Belize; CL)
32. *micropetala* (CL)
33. *molitissima* (Col.; CL)
34. *morifolia* (CL)
35. *morifolia* (WC, Arg., FC)
36. *mucronata* (WC, Bra., MV)
37. *nitida* (Guy., CL)
38. *pallens* (CL)
39. *palmeri* 'sublanceolata' (LCD)
40. *pergrandis* (RB)
41. *pittierii* (Belize, JMe)
42. *quadrangularis* (CL)
43. *rubra caps. fruit* (CL)
44. *rubra round fruit* (CL)
45. *seemannii* (Bel., JMe)
46. *seemannii* (C. Rica, MP)
47. *serratodigitata* (RB)
48. *suberosa* (WC, Arg., FC)
49. *subpeltata* (CL)
50. *tenuifila* (WC, Arg., FC)
51. *trifasciata* (CL)
52. *vitifolia* (CL)
53. *xdecaisneana x alata* (JV)
54. *platyloba x serrulata* (CL)

Cor Laurens

The following seed is available as of April 30, 2003:

1. *alliacea*
2. *ambigua*
3. *antioquiensis*
4. *apetala*
5. *arida ssp. arida*
6. *arizonica*
7. *aurantia*
8. *biflora*
9. *boenderi*
10. *capsularis*
11. *coriacea*
12. *cuneata*
13. *edults*
14. *edulis* (Black Knight)
15. *edulis* (hybrid)
16. *eichleriana*
17. *foetida* 'arizonica'
18. *foetida* 'parviflora'
19. *gibertii*
20. *herbertiana*
21. *holosericea*
22. *incarnata*
23. *indularia*
24. *laurifolia*
25. *ligularis*
26. *macrophylla*
27. *mexicana*
28. *mollissima*
29. *morifolia*
30. *mucronata*
31. *palmeri*
32. *palmeri* 'sublanceolata'
33. *pergrandis*
34. *pittieri*
35. *platyloba*
36. *quadrangularis*
37. *rubra*
38. *seemannii*
39. *serratifolia*
40. *suberosa*
41. *subpeltata*
42. *trifasciata*



Scott Pitman

Note: cv = cultivars of hybrids. Please support the seedbanks by regularly sending in your surplus seeds. For every **not-currently-listed** seed donation that you make you can request 5 packets for free. Otherwise, each seed packet is \$1.00 US + \$5.00 US for shipping and handling. Please state species preferences when ordering. Quantities are always limited and seed is available on a first come, first served basis. Members who donate seeds regularly always have first choice of seeds in limited supply (rare species). For those requesting seed from the International Seed Bank, please no cheques (!) but send cash in envelope.

Registrations...continued from pp. 18

Cor Laurens,
Veerweg 35, 4471 B J Wolphaartsdijk, NETHERLANDS.

John MacDougal,
9013 Madge Ave., St. Louis, MO 63144. USA

Tim Skimina,
8941 Kennedy Avenue, Highland IN 46322, USA.

John Vanderplank (Registrar)
Lampley Road, Kingston Seymour, Somerset. BS21 6XS.
UK.

Maurizio Vecchia,
Via Roma 11 B, 26010 Ripalta Cremasca (CR), ITALY.

Or our President:

Ron Boender
c/o Butterfly World at Tradewinds Park, 3600 West
Sample Road, Coconut Creek, Florida, USA.

Passiflora Society International

c/o Butterfly World at Tradewinds Park
3600 West Sample Road
Coconut Creek, FL 33073
USA



***Passiflora* 'Coory Rooymans'** (a new cultivar from Henk Wouters). See the New Cultivar Registrations report on pp. 18 of this issue. Photo by Henk Wouters.