

Passiflora 'Vanessa'

Registration Number: 220

Registration Date: May 23, 2015

Grower of original plant, Submitted by: Michael Graupe

Parentage: *P. luzmarina* x *P. loefgrenii* 'Corupa'



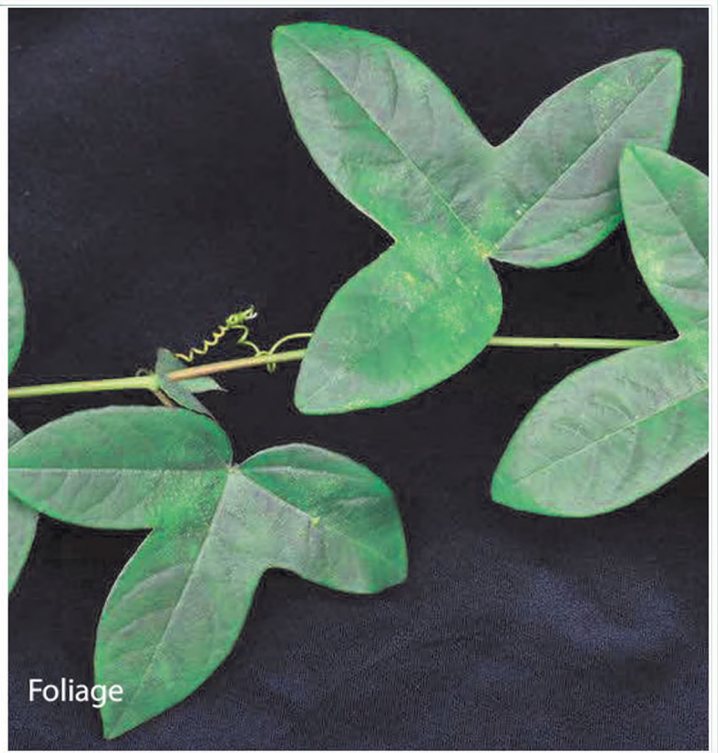
Sepal color: Red-violet
Petal color: Red-violet
Flower diameter: 9cm
Floral tube length: N/A
Flower shape: Recurved
Flower position: Oblique
Stigma color: Green
Styles color: Purple
Position of androgynophore: Center
Awns: Small
Quantity of pollen: None
Color of pollen: N/A
Scent: N/A

Blooming Period: N/A
Duration of bloom: N/A
Flower opens: N/A
Flower closes: N/A
Number of coronal series inner and outer: 4
Filament morphology: Curved
Color of outer coronal series: White with indigo tips
Color of inner coronal series: White
Lobation: 3
Foliage shape: Lobate
Foliage dimensions: 10-12 x 7-9cm
Leaf margin: Serrate



Flower

Adaxial texture: Waxy
 Abaxial texture: Flat
 Adaxial coloration: Dark green
 Abaxial coloration: Green
 Quantity of petiole glands: Multiple pairs
 Petiole gland shape: N/A
 Petiole gland color: Green
 Petiole gland position: N/A
 Vine color: N/A
 Vine shape: N/A
 Vine texture: Smooth
 Fruit shape: Round
 Fruit color: Unknown
 Fruit size: N/A
 Number of seeds: N/A
 Color of arils: N/A
 Flavor of arils: N/A
 Peduncle length: 8-12cm
 Peduncle position: Hanging



Foliage

Bract size: N/A
 Bract shape: N/A
 Bract color: N/A
 Extrofloral nectaries: N/A
 Description of stipules: N/A
 Vine vigor: Excellent
 Floriferousness: Excellent
 Light requirements: N/A

Humidity requirements: N/A
 Max temp: N/A
 Min temp for leaf hardiness: N/A
 Min temp for root hardiness: N/A
 Additional information: N/A
 Hybrid is named for: Michael Graupe's daughter.